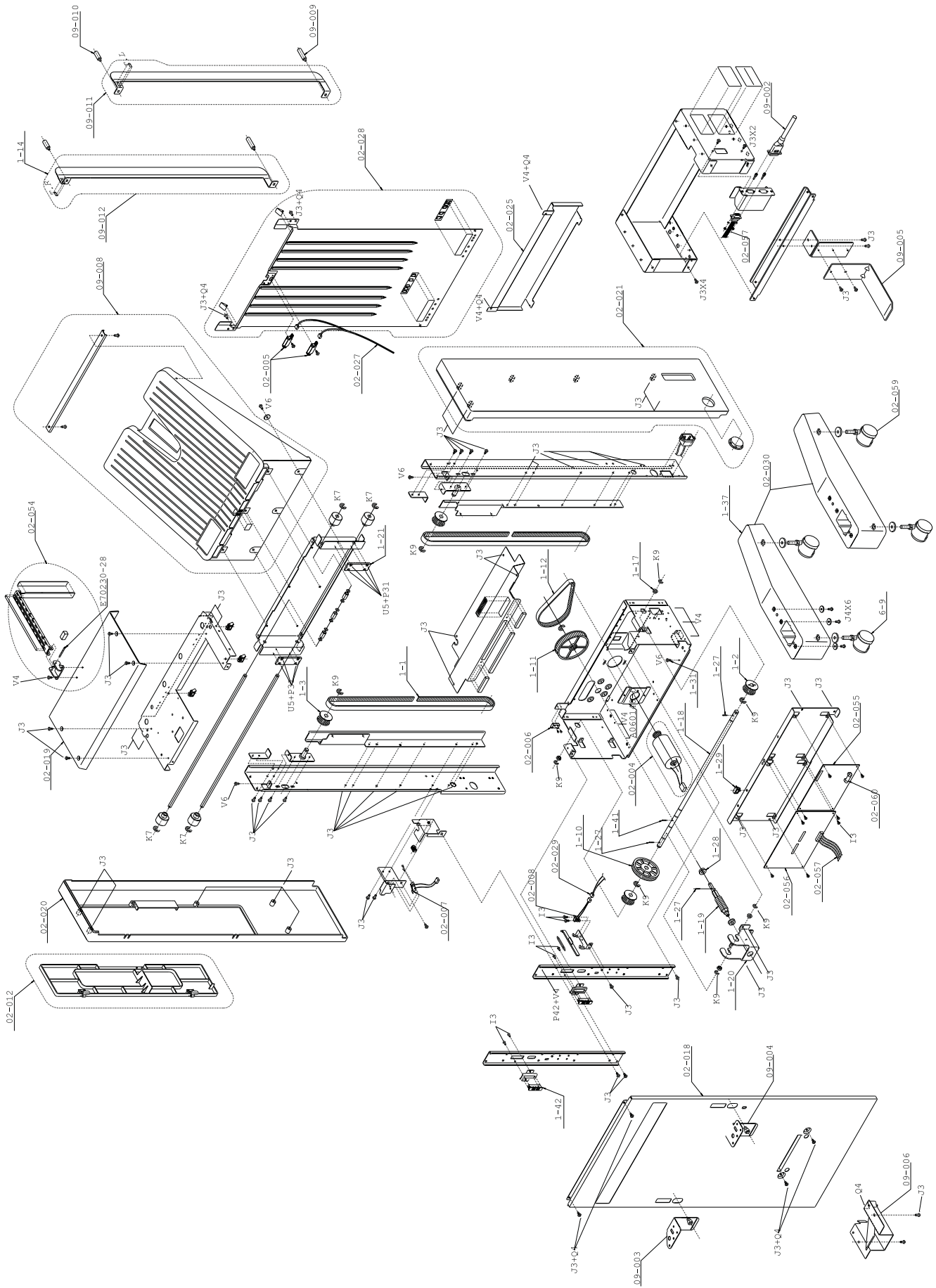
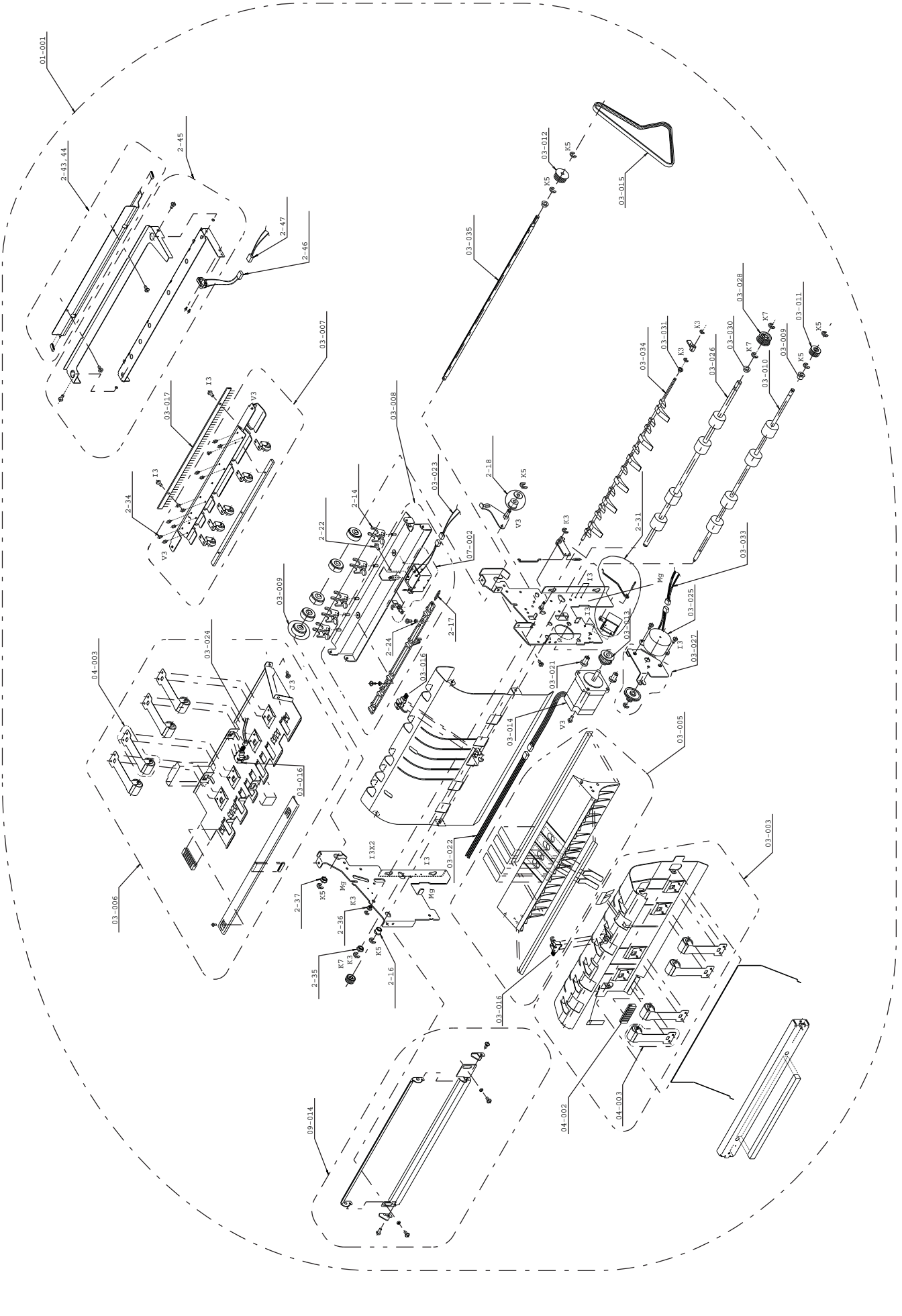




Appendix B P A R T S C A T A L O G

A.1 Exploded View





A.2 Parts List

Fig.	Part Code	Description	Remarks
01-001	5SNSAST30E07	PAPER FEED UNIT ASSY	
01-013	5SNSP0012132	SA, FRONT DOOR	
02-004	5SNSP0012124	SA, TRAY MOTOR	G932 (NISSEI)
02-005	5SNSP0012125	TRAY SENSOR	PS-R50L (HIKARIDENSHI)
02-006	5SNSP0012126	SA, TRAY BOTTOM SWITCH	UM40D11E01 (YAMATAKE)
02-007	5SNSP0012127	DOOR SWITCH	UM40D11E01 (YAMATAKE)
02-008	5SNSP0012128	SA, DOCKING SENSOR	SG-214 (HIKARIDENSHI)
02-018	5SNSP0012139	COVER RIGHT	
02-019	5SNSP0012140	COVER TOP	
02-020	5SNSP0012141	COVER FRONT	
02-021	5SNSP0012142	SA, COVER REAR	
02-025	5SNSP0012146	COVER, PULLEY	W/O THE HOLE FOR LOCKER SW
02-027	5SNSP0012148	HARNESS, TABLE SENSORS	CABLE-08
02-028	5SNSAST30E03	SA COVER LEFT ASSY	For center registration only
02-029	5SNSP0012149	HARNESS DOCKING SS	CABLE-12
02-008	5SNSP0012159	SA, EXIT MOTOR	103H6703-0342 (SANYO)
02-011	5SNSP0012161	SENSOR, PAPER EXIT	OS-5202-M (NIHON AREFU)
02-022	MBTPB3004TN	SCREW, BH M3 x 4	
02-026	5SNSP0012172	SA, FEED MOTOR	
02-055	5SNSP0012185	SA, POWER SUPPLY	
02-056	5SNSP0012186	MAIN CONTROL BOARD	WITH ROM
02-060	5SNSP0012188	FUSE	
02-057	5SNSP0012189	I/F CABLE INNER (S3)	S25
02-054	5SNSP0012191	SA, PAPER STOPPER	
03-022	5SNSP0012168	HARNESS, MOTOR	CABLE-07
03-023	5SNSP0012169	HARNESS MOD SOLENOID	CABLE-03, OFFSET, PATH SOL
03-024	5SNSP0012170	HARNESS P. INPUT MOD	CABLE-01
03-033	5SNSP0012181	HARNESS, PFM1	CABLE-06
09-012	5SNSAST30E01	GUIDE PAPER (R)	
09-011	5SNSAST30E02	GUIDE PAPER (L)	
09-009	5SNSP0012133	SCREW, KNURLED M4 x 8	
09-010	5SNSP0012151	SCREW, KNURLED M4 x 8	
09-008	5SNSP0012184	SA, TRAY	
09-002	5SNSP0012187	I/F CABLE, OUTER	